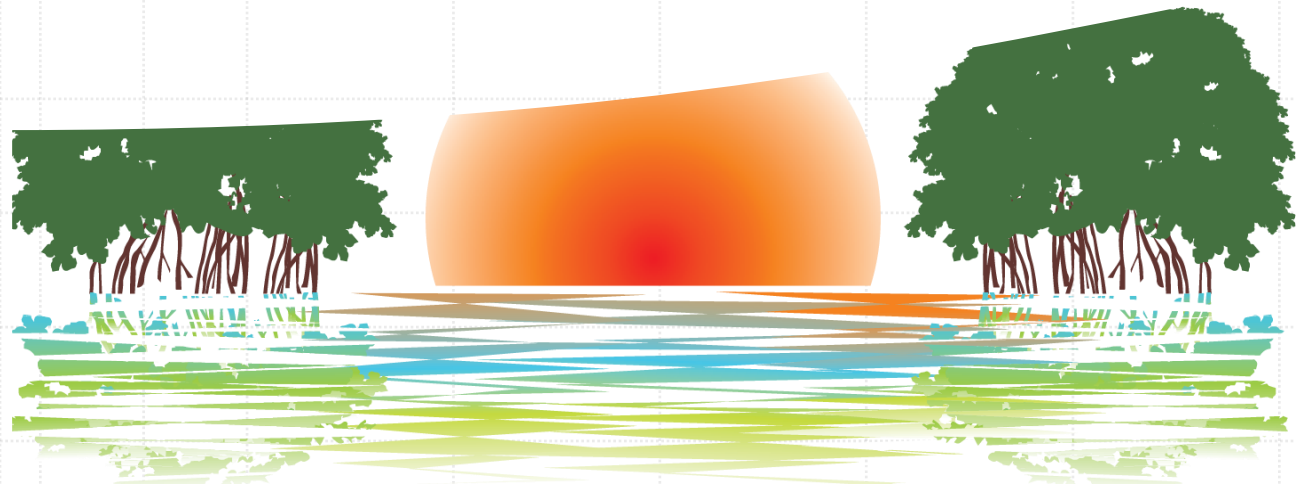
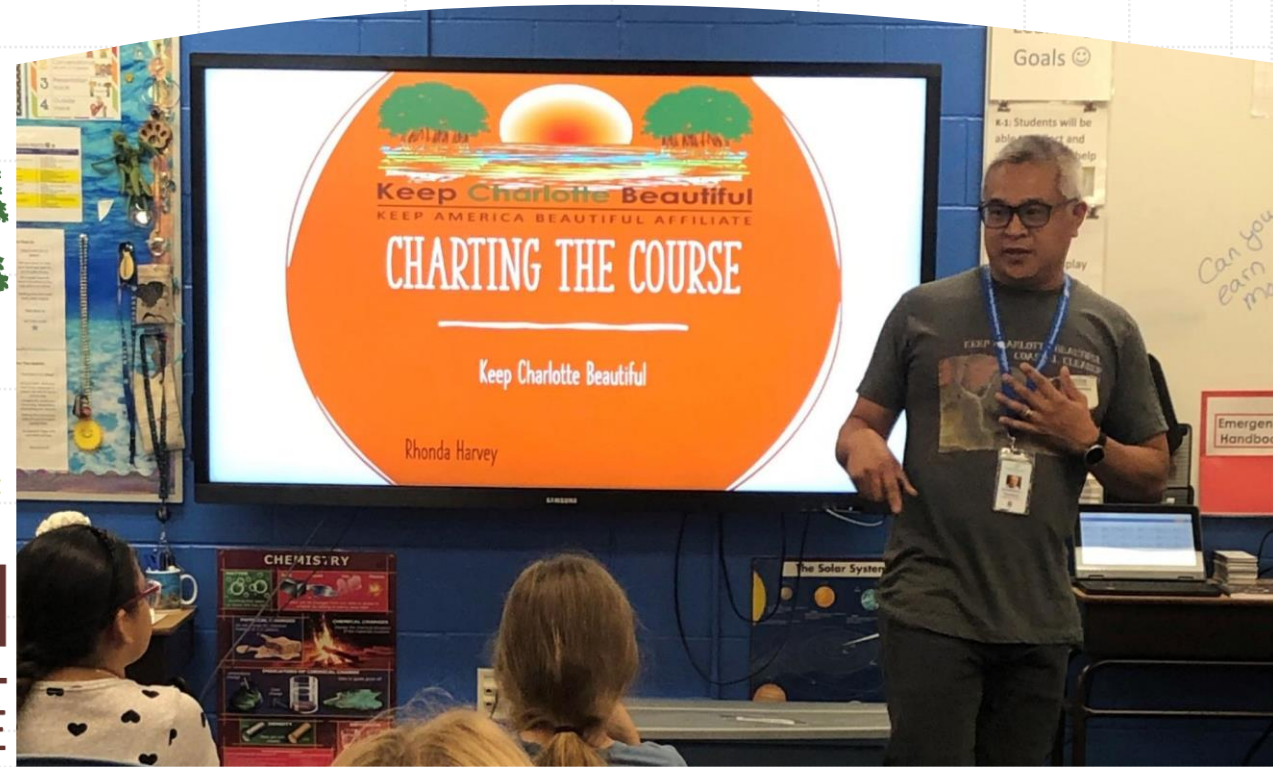


Waste in Place Environmental Education Program

Why and how we teach waste reduction and recycling in the Charlotte County School System.

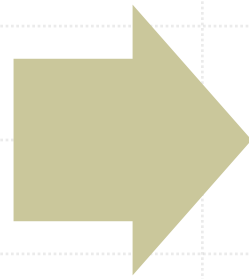


Keep Charlotte Beautiful
KEEP AMERICA BEAUTIFUL AFFILIATE



The Problem

- Teachers do not have Environmental Education opportunities.
- Classroom time is short.
- Lessons available were too long.
- Lessons need to be for K-5.
- Need to cover more classrooms.



The Solution

- Leverage relationships with teachers in S.T.E.M. Labs.
- S.T.E.M. Labs typically see all students in a week.
 - Build activity-based lessons.
 - Must be engaging and hands on!
 - Must be real-world oriented.

Putting the pieces together!

- *We worked with Interns to identify state standards.*
- *Interns created lessons.*
- *Sent the State Standards and a brief overview of the lessons to the S.T.E.M. teachers.*



Lessons Plans

- *Every grade level lesson is different.*
- *All focus on why waste reduction is important and how we each can help to reduce what is buried in the landfill.*
- *Elements incorporated:*
 - *Littering*
 - *Identification of materials*
 - *Recycling*
 - *Reuse*
 - *Composting*
 - *How a landfill is built and a trip to the landfill to see where “away” actually is.*





Example Lesson- The Layered Look

- *Learn how a landfill is built and why.*
- *Build a model of a landfill.*
- *Discuss during modeling about materials going into the landfill and where else they might be better used.*
- *End by closing the landfill and planting grass seeds.*
- *Leave models with classrooms to allow further observations.*

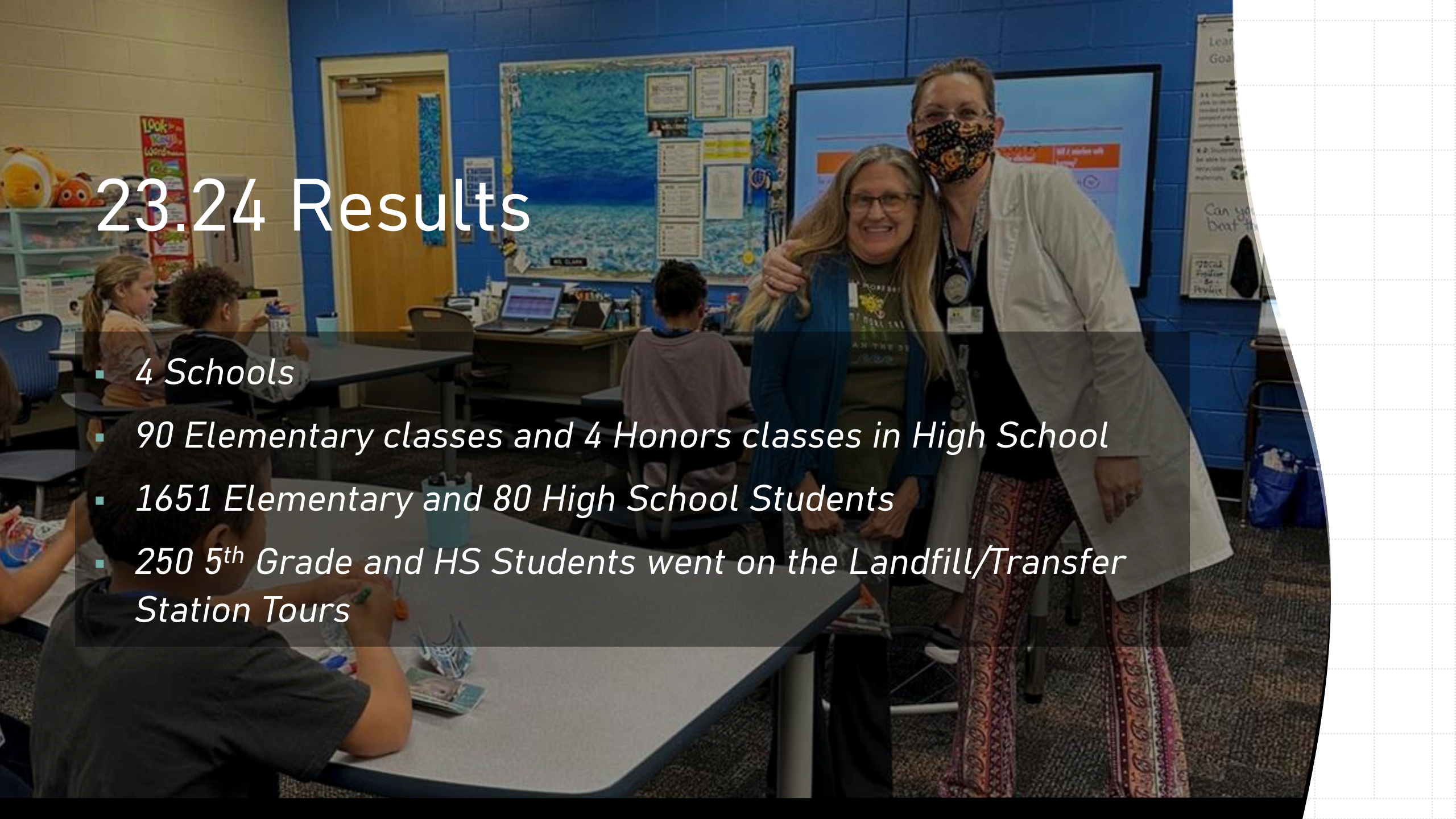
Landfill and Transfer Station Tour

- *5th grade was chosen because they do not have an educational field trip.*
- *Landfill is first stop to tour by bus.*
- *They get off to see the equipment crush boats and at the OPS building to see how leachate is processed.*
- *We continue to focus on why we should protect this resource.*
- *Transfer Station is the next stop. Students can see how we divert some items from the landfill.*
- *Last stop is a park for a bag lunch provided by the school.*



23.24 Results

- 4 Schools
- 90 Elementary classes and 4 Honors classes in High School
- 1651 Elementary and 80 High School Students
- 250 5th Grade and HS Students went on the Landfill/Transfer Station Tours



Partnerships



This program is only possible through these partnerships.

